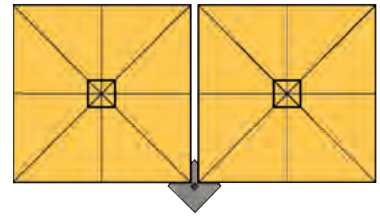


# Saule P6 Square Duo

The P6 Square Duo features two cantilever umbrellas on a single support pole, giving shade coverage up to 200 square feet.



**Dimensions**  
(2) 8' x 8' | XL (2) 10' x 10'

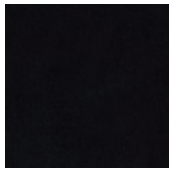


## P6 Umbrella Colors

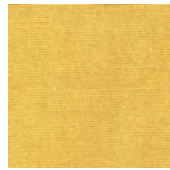
UPF 50+ filters 100% of UV rays



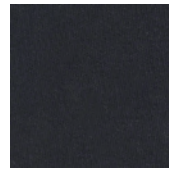
Bitter Orange



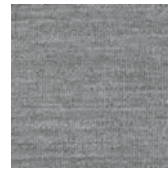
Black Widow



Buttercup



Carbon Gray



Lead Gray



Natural White



Night Blue



Olive Green



Paris Red



Taupe



Terra Cotta

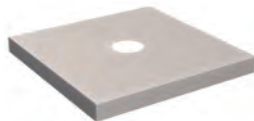


White Sand

## P6 Mounting Hardware



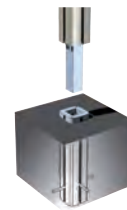
Steel Base  
35" x 35" | 40' x 40' XL



Cover for Steel Base  
35" x 35" | 40' x 40' XL



Square Steel Floor Plate  
28" x 28"



Ground Anchor  
To secure into concrete.  
Made from stainless steel  
and aluminum



Wall Bracket  
For use with square  
P6 Uno or P6 Duo only

