

# S2000XL









## The Standard Unit

S2000 is inclusive of a freestanding structure prefabricated to the specified dimensions, including a motorized louver roof with an integrated rain gutter system, and bolt-down type footings concealed inside the vertical posts.



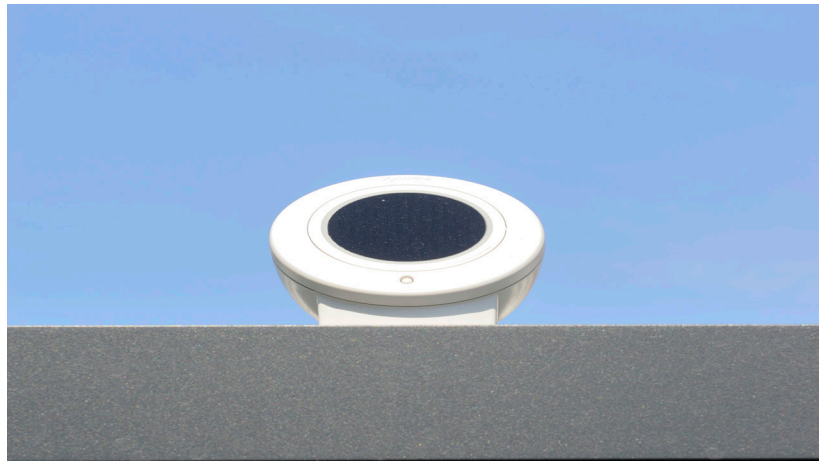
## Heaters

Heaters are available as an additional option, providing warmth and extending the length of usability of your shelter to other seasons.



## Wind, Rain/Snow Sensors

Enjoy your pergola worry-free in inclement weather with the option to add wind sensors to your screens and rain/ snow sensors to your roof. This allows for automatic closing of these areas when the wind, rain, or snow activates the sensors.



## LED Lighting

Lighting options are available in 4 types controlled by a remote with a bonus dimming function.

- In Louver LED
- Spot Lights
- LED Gutter Down Perimeter Lighting
- LED Gutter up Perimeter Lighting

Featuring White and RGB lights for an unforgettable ambiance day and night.



## Screens

Integrated screens are available on each side of the pergola, or in between posts to create further privacy on coupled units. Available in a multitude of colors and PVC clear options as well. Easily operated by a remote control.

The minimum screen size is 8'-6" W and the maximum is 19'-10" W. With a maximum screen height of 9'-10" H.

## Standard Color Options

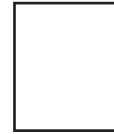
Powder Coated Aluminum has a strong UV Resistance, does not contain solvents or VOCs, and resists against scratches, corrosion, and chipping. Available in 4 standard colors Quarts Grey, Anthracite Grey, Traffic White and Jet Black.



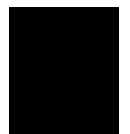
Quarts Grey  
RAL 7039  
Frame Only



Anthracite Grey  
RAL 7016



Traffic White  
RAL 9016



Jet Black  
RAL 9005  
Frame Only

## Custom Color Options

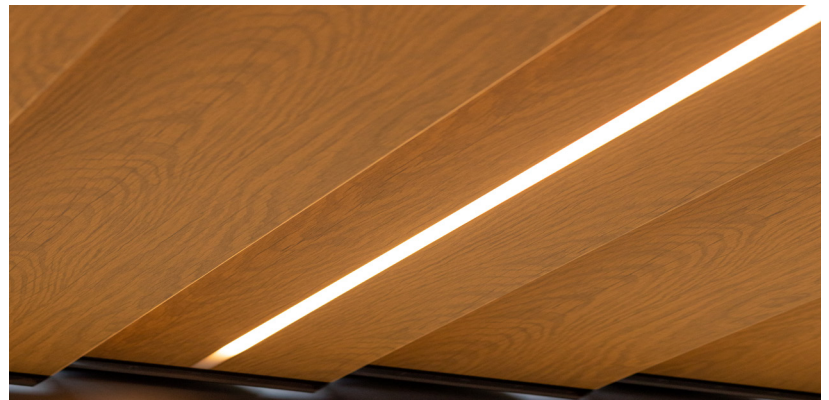
Custom RAL Powder Coats are available for both the frame and the louvers so that you can match existing architecture or personal taste. From matching a sage green, pale blue, or specific gray color there are over 500 color options to choose from.



## Wood-Look Louvers

Custom wood-look louvers provide the warmth of a wood feel with the practical advantages of aluminum. Available in a warm oak finish and the option to add LED in the louver.

Benefits of wood-look aluminum are no distortion or discoloration, easy to clean, and minimal maintenance with color-fast technology.



## Side Panels

Side panels are available in standard frame colors, custom RAL colors, wood-look aluminum, or thermal popular wood panels. Allowing you to put privacy where you need it. Available in fixed or sliding panels.



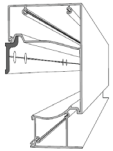


## Mounting Options



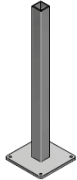
### Standard Pole Support

Concealed inside the post ground anchor, this mount provides direct anchorage to an existing slab.



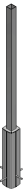
### Wall Mount

This wall mount provides a cleat-like connection to the structure ensuring a close fit.



### Floor plate

External ground mounts are available and give easy access to the mounting plate. A great option if you have flooring to overlay on the plate for a seamless look.



### Ground Anchor

For use with a concrete footing and provides a concealed and flush look.

## Multiple Configuration Options (roof only and wall mount options also available)

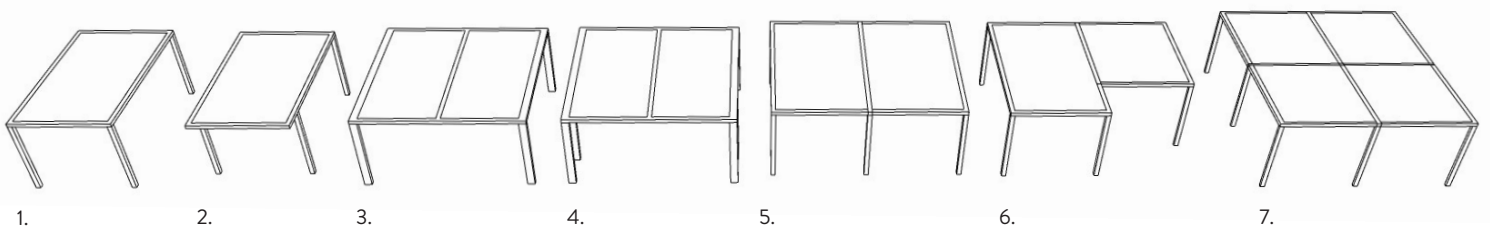
Single Roof 4 Post Max Dimension: 13'-1" W x 24'-7" L or 14'-9" W x 19'-8" L

Double Roof 4 Post 19'-8" W x 19'-8" L

Double Roof 6 Post 22'-11" W x 22'-11" L

Overhang possible up to 6'-6" inward; not to exceed 1/3 of the length

Standard Height 9'-10" H



1. Stand Alone | 2. Stand Alone with Overhang | 3. Coupled Roof | 4. Coupled with Door Pole | 5. Coupled in Length or Width | 6. L - Configuration | 7. Star Configuration

