

CABANA





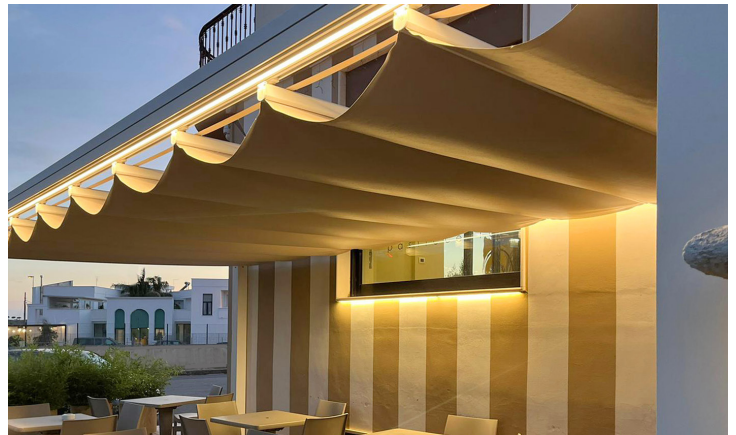
The Standard Unit Cabana

Cabana is inclusive of a freestanding structure prefabricated to the specified dimensions, including a manual roman shade roof, and bolt-down type footings concealed inside the vertical post.



LED Lighting

LED strip lighting can be integrated into the purlins of the roof structure. Controlled by a remote and available in white 13w/3.3 feet, and RGB 10W/3.3 feet.



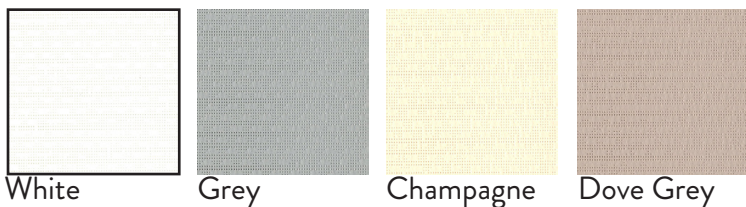
Screens

Integrated screens are available in two options.

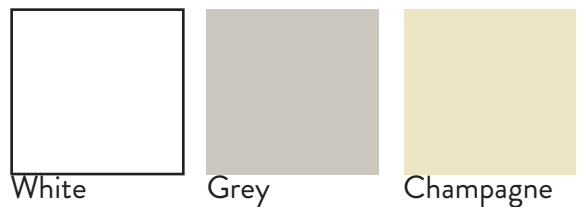
- Motorized Zip Screens
- Manual VOK Screens
- Soltis 96 Waterproof Fabric
- 502 Satin Waterproof Fabric
- Clear cristalplus



Soltis 96



502 Satin



Standard Color Options

Powder Coated Aluminum has a strong UV Resistance, does not contain solvents or VOCs, and resists against scratches, corrosion, and chipping. Available in 4 standard colors Dark Brown, Dove Grey, Special Grey, and White



Custom Color Options

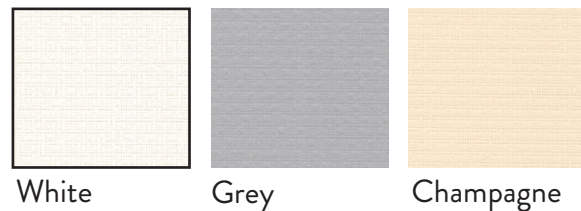
Custom RAL Powder Coats are available for both the frame so that you can match existing architecture or personal taste. From matching a sage green, pale blue, or specific gray color there are over 500 color options to choose from.



Canopy Color Options

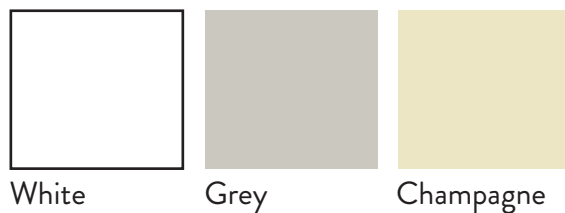
The manually operated roman roof shade is locked in to place with magnet sockets. This roof shade is made of PVC sheets that allow for east maintance.

Soltis W96



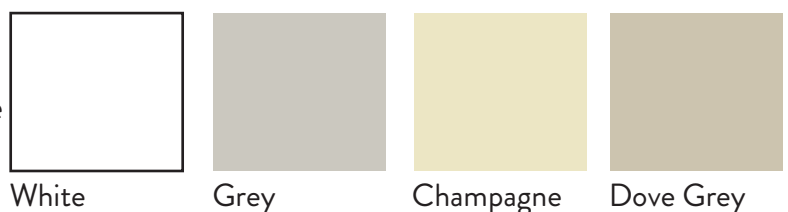
Soltis Proof W96 protects against sun and weather, while preserving the level of natural light with translucent and waterproof material. Also available in a non water proof version as Soltis 96.

Preconstraint 402



Preconstraint 402 has a laquered finish on both sides and protects against rain, UV and heat, complying with the leading fire classifications.

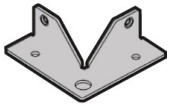
Matt Blackout 602



Matte Blackout 602 is a high performance PVC with acylic finish on both sides. Provides 100% black out and a thermal barrier.

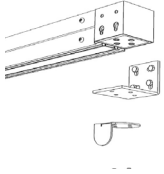


Mounting Options



External Mount

Visible from the outside of the post, this mount provides direct anchorage to an existing slab.



Wall Mount

This wall mount provides a L- Shape bracket to replace where the upright post would support the structure.



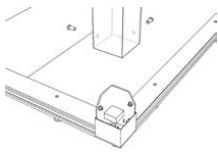
Internal Mount

Concealed inside the post, this mount provides direct anchorage to an existing slab.



Sandy Foot Mount

Concealed inside the post, this mount provides a lengthy footing in to a sandy surface.



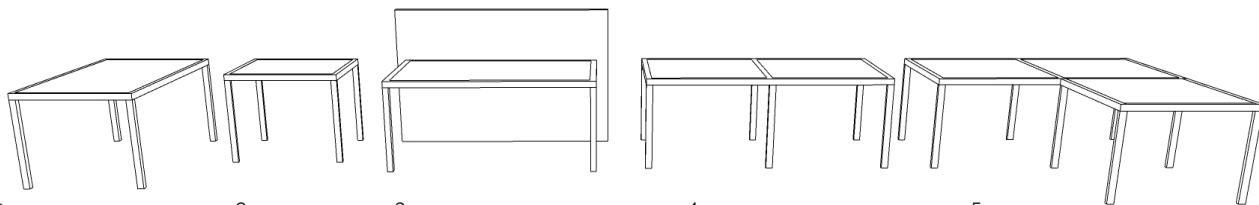
Horizon Flooring Accessory

Horizon flooring replaces the direct anchorage to an existing slab or surface with a weighted ballast option.

Multiple Configuration Options

Multiple Configuration Options (roof only and wall mount options also available)

Single Roof 4 Post Max Dimension: 19'-8" W X 16'-4" L X 8'-3"H



1. Stand Alone Rectangle | 2. Stand Alone Square | 3. Wall Mount | 4. Coupled on Width or Length | 5. L - Configuration

