

# P4 UMBRELLA SERIES



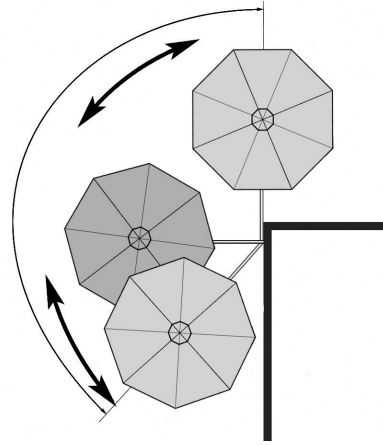
[shelteroutdoor.com](http://shelteroutdoor.com) | 855.768.4450

**SHELTER**  
o u t d o o r



## P4 Series

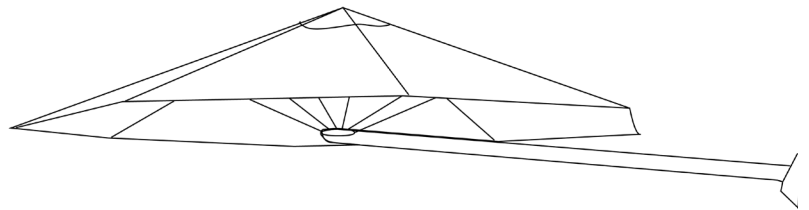
This umbrella can be locked at a 45-degree angle, so it is easy to open. The telescopic arm can swing horizontally and can be locked either horizontally, vertically or at a 45-degree angle. The P4 pivots and tilts up to 10 degrees to create the perfect shade for your space.



## Available Dimensions

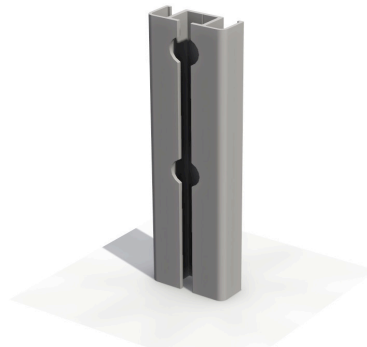
The fabrics are fade resistant, waterproof and are also resistant to mildew and stains.

9' Round Canopy



## Mounting Options

The P4 umbrella is available as a wall mount umbrella.



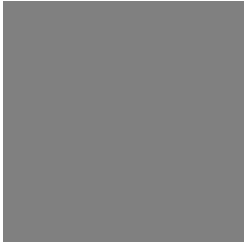
## Covers

This cover is a mass dyed surlast cloth in grey or black. Each protection cover comes with an easy open zipper and poles in the cover to aid in covering and uncovering. Protecting your canopies during storms or off-season storage.



## Frame finish options

RAL Powder Coated Aluminum Frame finish.



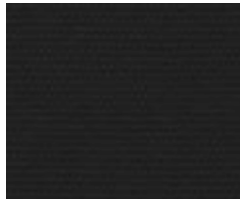
Grey

## Canopy Colors

Fabrics are fade resistant, waterproof and resist mildew and stains. UPF 50+ filters 100% of UV rays.



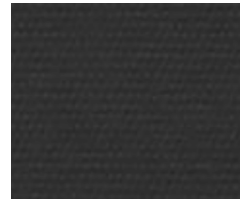
Bitter Orange



Black Widow



Butter Cup



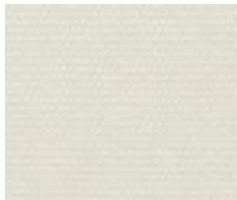
Carbon Grey



Denim Blue



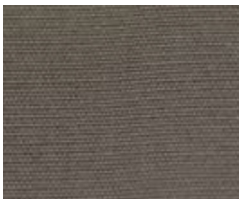
Leaf Green



Natural White



Platinum Grey



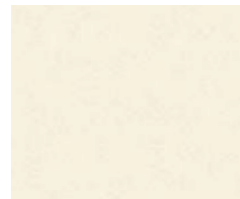
Taupe



Terra Cotta



Traffic Red



White Sand

\*Custom Canopy colors available for additional fee

## Base Options



### Wall Bracket

Two wall brackets provide a sturdy connection.

