

P7 UMBRELLA SERIES





P7 Series

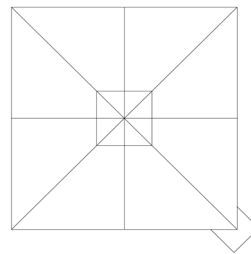
The P7 Umbrella rotates up to 300 degrees to create shade where you need it most. Easy manual operation that is extremely straightforward with the “One Move System”, which allows you to open and close with minimal effort. The stainless-steel gas spring ensures a unique level of ease.



Available Dimensions

The fabrics are fade resistant and waterproof and are also resistant to mildew and stains.

- 8'x8' Square Canopy
- 10'x10' Square Canopy
- 11.5' Round Canopy
- 14' Round Canopy



Mounting Options

The P7 umbrellas can be freestanding, or ground anchored. Allowing versatile options for coverage and placement of this series.



Heaters

Heaters are available as an additional option providing warmth and extending the length of usability of your umbrella to other seasons. Each heater comes with a bracket and a single or double socket.

Gutters

Easily connect multiple canopies together to have rain protection. The rain gutter has a conical shape, meaning that one side is smaller than the other side to make sure that the water flows away.

Casters

Castors with brakes are available for this series. Allowing you to easily move or rotate the umbrella as needed.

Covers

This cover is a mass dyed surlast cloth in grey or black. Each protection cover comes with an easy open zipper and poles in the cover to aid in covering and uncovering. Protecting your canopies during storms or off-season storage.

Frame finish options

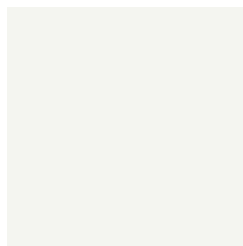
RAL Powder Coated Aluminum Frame finish options are available in five colors.



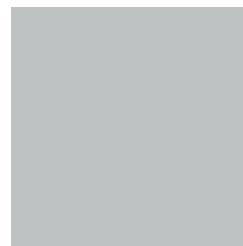
Grey



Black



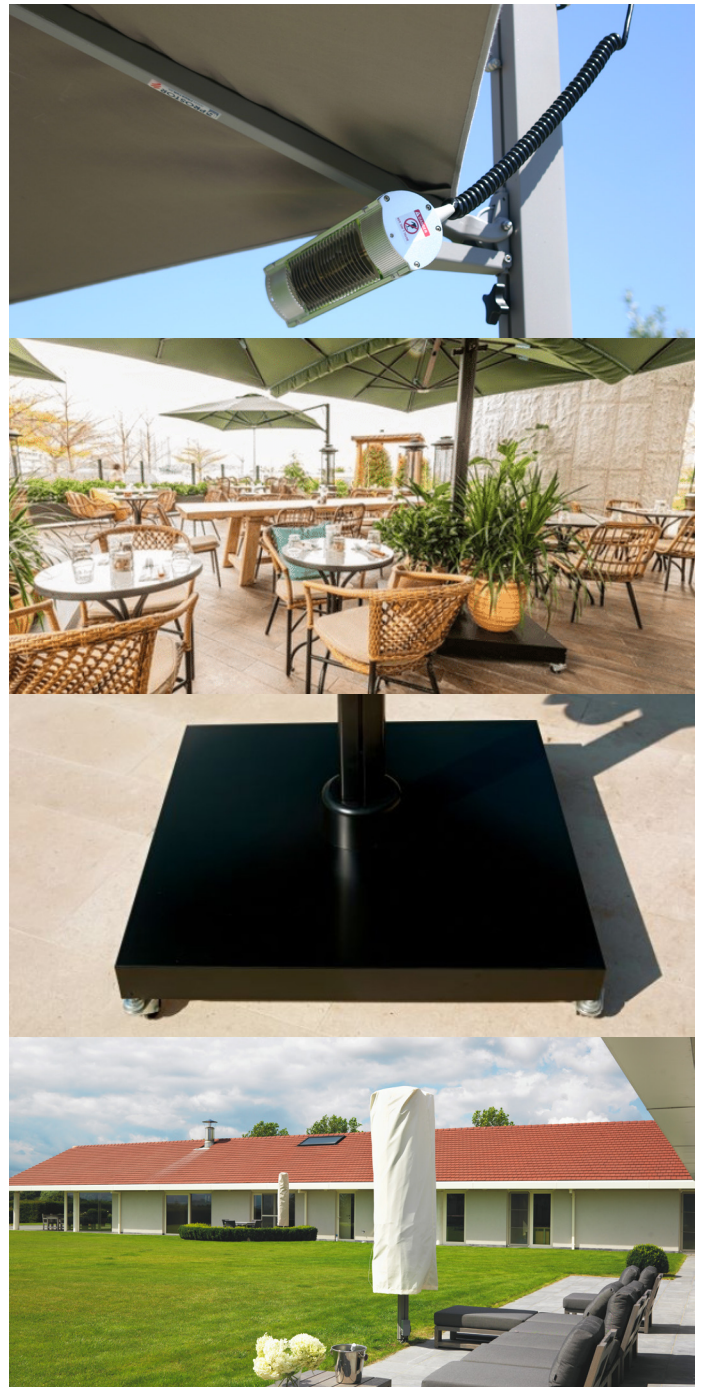
White



Polished Silver



Copper



Canopy Colors

Fabrics are fade resistant, waterproof and resist mildew and stains. UPF 50+ filters 100% of UV rays.



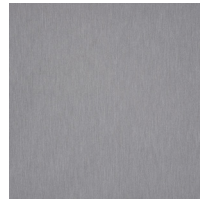
Black Widow



Buttercup



Carbon Gray



Lead Gray



Natural White



Night Blue



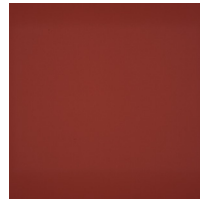
Olive Green



Paris Red



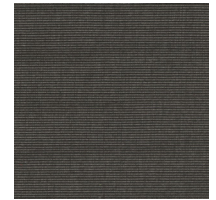
Taupe



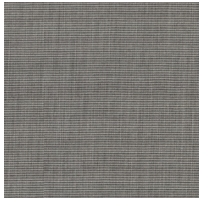
Terra Cotta



White Sand



Tweed Black
(premium)



Tweed Gray
(premium)



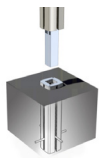
Tweed Shell
(premium)



Tweed Toast
(premium)

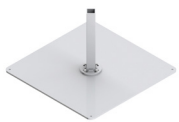
*Custom Canopy colors available for additional fee

Base Options



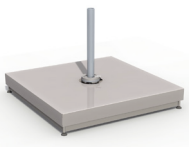
In-Ground Rotating Anchor

Concealed inside the post ground anchor, this mount provides direct anchorage to an existing slab; while still allowing the umbrella to rotate 300 degrees.



Steel Floorplate

External ground mounts are available and give easy access to the mounting plate; while still allowing the umbrella to rotate 300 degrees. A great option if you have flooring to overlay on the plate for a seamless look.



Steel Base + Cover

A weighted steel base and a steel cover with a rotating base up to 300 degrees. Ballast not included.



Wall Mount Bracket

Wall Mount brackets are available for the top and bottom of the post giving an option for areas with limited floor space.

